

Activity ID	Activity Name	Original Duration	Remaining Duration	Start	Finish	Total Float	2011			
							Sep	Oct	Nov	Dec
<b>Reclamation in NPR3 ver.9.5 2011_11_21</b>		115	23	21-Jul-11 A	19-Dec-11	-39				
<b>Landside</b>		115	23	05-Aug-11 A	19-Dec-11	-39				
	Installation Seawall Blocks to B6 and B7	55	0	13-Aug-11 A	18-Oct-11 A					
	Construct the Concrete Coping at B6 and B7	82	0	13-Aug-11 A	07-Nov-11 A					
	Laying Geotextile & Filter Material	86	0	05-Aug-11 A	14-Nov-11 A					
	Construct Open Channel U under IEC	33	0	23-Sep-11 A	30-Oct-11 A					
	Construct Open Channel U outside IEC	32	20	30-Sep-11 A	15-Dec-11	-36				
	Construct the Drainage Pipeline at West of Open Channel U	34	0	30-Sep-11 A	31-Oct-11 A					
	Construct the Drainage Pipeline at East of Open Channel U	28	17	01-Nov-11 A	15-Dec-11	-31				
	Unloading Sorted Public Fill behind new seawall	53	0	15-Aug-11 A	20-Nov-11 A					
	Reclamation	98	23	13-Aug-11 A	19-Dec-11	-39				
<b>Seaside</b>		100	23	21-Jul-11 A	19-Dec-11	-39				
	Construction of Outlet Pipe from City Garden	54	20	12-Oct-11 A	19-Dec-11	-34				
	Construction of B8	13	13	15-Nov-11 A	09-Dec-11	-31				

█ Actual Work    
 █ Critical Remaining Work    
 ▼ Summary  
█ Remaining Work    
 ◆ Milestone

Contract No. HK/2009/01

Contract Title : Wan Chai Development Phase II - Central - Wan Chai Bypass at HKCEC

**Working Programme for Marine Works (Dredging and Backfilling)**

ACTIVITY	START	FINISH	2010												2011												2012												2013																			
			Feb	Mar	Apr	May	Jun	Jul	Aug	Sep	Oct	Nov	Dec	Jan	Feb	Mar	Apr	May	Jun	Jul	Aug	Sep	Oct	Nov	Dec	Jan	Feb	Mar	Apr	May	Jun	Jul	Aug	Sep	Oct	Nov	Dec	Jan	Feb	Mar	Apr	May	Jun	Jul	Aug	Sep	Oct	Nov	Dec									
<b>Submissions before Works Commencement</b>																																																										
Submit silt curtain deployment plan	31/3/10	31/3/10	◆																																																							
Submit silt screen deployment plan	31/3/10	31/3/10	◆																																																							
Submit measures to mitigate noise impact	31/3/10	31/3/10	◆																																																							
<b>Cross Harbour Watermains from WCN to TST (DP6)</b>																																																										
Trench dredging for marine watermains installation	29/4/10	28/10/10				■																																																				
Backfilling for watermain	28/1/11	14/12/11													■																																											
<b>Reclamation Works at HKCEC Water Channel (DP3)</b>																																																										
Dredging at HKCEC Water Channel (Western Part)	1/6/10	1/8/10			■																																																					
Backfilling to +3.5mPD (Western Part)	17/8/10	6/2/11				■																																																				
Dredging at HKCEC Water Channel (Middle Part)	2/8/10	6/1/11				■																																																				
Backfilling to +3.5mPD (Middle Part)	21/2/11	1/6/11													■																																											
Dredging at HKCEC Water Channel (Eastern Part)	1/12/12	31/12/12																																					■																			
Backfilling to +3.5mPD (Eastern Part)	16/1/13	30/4/13																																					■																			

**Dredging & Reclamation Works Programme Summary  
(based on Initial Works Programme Rev. 0)**



ID	Task Name	Duration	Start	Timeline															
				2010	2011	2012	2013	2014	2015	Q4	Q1	Q2	Q3	Q4	Q1	Q2	Q3	Q4	Q1
1	<b>HK/2009/02-Marine &amp; Reclamation Works</b>	<b>2008 d</b>	<b>Thu 28/1/10</b>	[Summary bar from Q4 2009 to Q4 2015]															
2	Contract Commencement	0 d	Thu 28/1/10	[Milestone diamond at start of timeline]															
3	<b>General</b>	<b>1879 d</b>	<b>Mon 22/2/10</b>	[Summary bar from Q1 2010 to Q4 2015]															
4	Submission & obtain approval for marine GI	21 d	Mon 22/2/10	[Task bar in Q1 2010]															
5	Stage 1 Marine GI for reclamation	30 d	Mon 15/3/10	[Task bar in Q1 2010]															
6	Engineer's Design review for Dredging of WCR1, WCR2 & WCR4	30 d	Mon 22/3/10	[Task bar in Q1 2010]															
7	Relocation of New Star Ferry Pier	0 d	Tue 18/3/14	[Milestone diamond in Q3 2014]															
8	Demolition of Existing Star Ferry Pier	100 d	Tue 18/3/14	[Task bar in Q3 2014]															
9	Stage 2 Marine GI for Reclamation	14 d	Tue 18/3/14	[Task bar in Q3 2014]															
10	Engineer's Design review for Dredging of WCR3	21 d	Tue 25/3/14	[Task bar in Q3 2014]															
11	Complete Diversion of Hung Hing Road Traffic Back to Original	20 d	Fri 6/2/15	[Task bar in Q2 2015]															
12	Excavate & remove top of d-wall for permanent seawall construction	50 d	Wed 25/2/15	[Task bar in Q2 2015]															
13	<b>Submarine Outfall</b>	<b>500 d</b>	<b>Tue 21/9/10</b>	[Summary bar from Q3 2010 to Q4 2011]															
14	Dredging, Laying and Backfilling of Submarine Outfall Pipe at Sea	500 d	Tue 21/9/10	[Task bar from Q3 2010 to Q4 2011]															
15	<b>Phase 1 - WCR1</b>	<b>158 d</b>	<b>Wed 21/4/10</b>	[Summary bar from Q1 2010 to Q2 2011]															
16	Mobilization of plants	1 d	Wed 21/4/10	[Task bar in Q1 2010]															
17	Seabed dredging	63 d	Wed 21/4/10	[Task bar in Q1 2010]															
18	Bedding Filling and Permanent seawall (precast cassion)	60 d	Tue 22/6/10	[Task bar in Q2 2010]															
19	Bulk reclamation	37 d	Fri 20/8/10	[Task bar in Q2 2010]															
20	<b>Phase 2 - WCR2</b>	<b>149 d</b>	<b>Thu 1/3/12</b>	[Summary bar from Q3 2011 to Q4 2012]															
21	Mobilization of plants	1 d	Thu 1/3/12	[Task bar in Q3 2011]															
22	Temp seawall and Seabed dredging	77 d	Thu 1/3/12	[Task bar in Q3 2011]															
23	Bulk reclamation	73 d	Wed 16/5/12	[Task bar in Q4 2011]															
24	<b>Phase 3 - TWCR4 &amp; WCR4</b>	<b>98 d</b>	<b>Sat 28/4/12</b>	[Summary bar from Q4 2011 to Q2 2012]															
25	Mobilization of plants	1 d	Sat 28/4/12	[Task bar in Q4 2011]															
26	Temp Seawall and Seabed dredging	75 d	Sat 28/4/12	[Task bar in Q4 2011]															
27	Bulk & temp reclamation	24 d	Wed 11/7/12	[Task bar in Q1 2012]															
28	<b>Phase 4 - WCR3</b>	<b>294 d</b>	<b>Tue 18/3/14</b>	[Summary bar from Q3 2012 to Q4 2014]															
29	Mobilization of plants	1 d	Tue 18/3/14	[Task bar in Q3 2012]															
30	Seabed dredging for Permanent Seawall	112 d	Tue 18/3/14	[Task bar in Q3 2012]															
31	Backfill and permanent seawall (precast cassion)	108 d	Tue 8/7/14	[Task bar in Q4 2012]															
32	Bulk reclamation	74 d	Fri 24/10/14	[Task bar in Q4 2012]															
33	<b>Phase 5 - Construct Permanent Seawall Blocks along curved coastline &amp; Remove TWCR4</b>	<b>105 d</b>	<b>Wed 15/4/15</b>	[Summary bar from Q1 2013 to Q2 2015]															
34	Mobilization of plants	1 d	Wed 15/4/15	[Task bar in Q1 2013]															
35	Dredging and Filling for permanent seawall construction	50 d	Wed 15/4/15	[Task bar in Q1 2013]															
36	Construction of Permanent Seawall Blocks for curved coastline	56 d	Wed 3/6/15	[Task bar in Q2 2013]															
37	Remove temp seawall and reinstate the location of TWCR4	30 d	Mon 29/6/15	[Task bar in Q2 2013]															

Project: Reclamation Works Programme  
Date: Tue 9/3/10

Task		Summary		Rolled Up Progress		Project Summary	
Progress		Rolled Up Task		Split		Group By Summary	
Milestone		Rolled Up Milestone		External Tasks		Deadline	

Activity ID	Cal ID	Activity Description	Orig Dur	Early Start	Early Finish	Year												
						2010	2011	2012	2013	2014	2015	2016	2017					
<b>TCBR1E (TS1 Area)</b>																		
105	1	TCBR1E(TS1)-dredging+rockfill(pre. for seawall)	86	03DEC10*	26FEB11													
110	1	TCBR1E (TS1)-temporary reclamation	69	28JAN11*	06APR11													
155	1	TCBR1E (TS1)- removal of temporary reclamation	27	30JAN12*	25FEB12													
<b>TCBR4</b>																		
100	1	Maintenance dredging for navigation safety for	7	20NOV10*	26NOV10													
<b>TCBR2 + TCBR3 (TS2 Area)</b>																		
115	1	TCBR2&TCBR3(TS2)- Maintenance dredging for	5	15NOV10*	19NOV10													
117	1	TCBR2&TCBR3(TS2)-dredge+rockfill seabed	64	16DEC11*	17FEB12													
120	1	TCBR2&TCBR3(TS2) --temporary reclamation	115	26FEB12*	19JUN12													
160	1	TCBR2&TCBR3(TS2-removal temporary reclamation	57	18AUG13*	13OCT13													
<b>TCBR1W (TS4 Area)</b>																		
125	1	TCBR1W(TS4)-dredging+rockfill(pre. for seawall)	40	19DEC10*	27JAN11													
130	1	TCBR1W(TS4) --temporary reclamation	68	28JAN11	05APR11													
165	1	TCBR1W(TS4)--removal temporary reclamation	26	27OCT13*	21NOV13													
<b>TPCWAE</b>																		
135	1	TPCWAE-dredging+rockfill(pre. for seawall)	55	03DEC10*	26JAN11													
140	1	TPCWAE --temporary reclamation	77	27JAN11	13APR11													
170	1	TPCWAE--removal temporary reclamation	28	28SEP13*	25OCT13													
<b>TPCWAW</b>																		
145	1	TPCWAW-dredging+rockfill(pre. for seawall)	47	28OCT13*	13DEC13													
150	1	TPCWAW --temporary reclamation	83	14DEC13	06MAR14													
175	1	TPCWAW--removal temporary reclamation	50	02JUL15*	20AUG15													



 Early Bar  
 Progress Bar  
 Critical Activity

©Primavera Systems, Inc.

EP02 CHINA STATE CONSTRUCTION ENGG LTD Sheet 1 of 1

CONTRACT NO. HY/2009/15: CENTRAL WAN CHAI BYPASS- TUNNEL (CBTS SECTION)

Prepared based on IWP Rev. 0  
Date Prepared: 28 Oct 2010

Act ID	Description	Orig Dur	Early Start	Early Finish	2011												2012												2013					
					JAN	FEB	MAR	APR	MAY	JUN	JUL	AUG	SEP	OCT	NOV	DEC	JAN	FEB	MAR	APR	MAY	JUN	JUL	AUG	SEP	OCT	NOV	DEC	JAN	FEB	MAR			
<b>Section I</b>																																		
<b>Contract Obligation</b>																																		
1000	Commencement of Section I of works	0	20JAN11 *		◆ Commencement of Section I of works																													
<b>Initial Works</b>																																		
1050	Apply Marine notice to Marine Department	30	21JAN11	19FEB11	■ Apply Marine notice to Marine Department (dredg)																													
1060	Apply Marine notice to Marine Dept. Piling	30	18FEB11	19MAR11	■ Apply Marine notice to Marine Dept. Piling																													
1080	Apply FEP under EP356/2009	21	28FEB11	20MAR11	■ Apply FEP under EP356/2009																													
1081	Submission of Works Schedule for FEP	14	05MAR11	21MAR11	■ Submission of Works Schedule for FEP																													
1082	Submission of Location Plan for FEP	14	05MAR11	21MAR11	■ Submission of Location Plan for FEP																													
1083	Submission of Silt Curtain Deployment	14	05MAR11	21MAR11	■ Submission of Silt Curtain Deployment Plan																													
1084	Submission of Silt Screen Deployment Plan	14	05MAR11	21MAR11	■ Submission of Silt Screen Deployment Plan																													
1085	Submission Noise Management Plan	14	05MAR11	21MAR11	■ Submission Noise Management Plan																													
1090	Apply Dumping Permit	30	18FEB11	19MAR11	■ Apply Dumping Permit																													
1100	Apply CNP	30	31JAN11	01MAR11	■ Apply CNP																													
1110	Apply C&D waste disposal	30	20JAN11	18FEB11	■ Apply C&D waste disposal																													
1120	Apply Discharge licence	30	18FEB11	19MAR11	■ Apply Discharge licence																													
1130	Notification of chemical waste Producer	30	20JAN11	18FEB11	■ Notification of chemical waste Producer																													
1140	Notification to Labor Dept-Works	30	20JAN11	18FEB11	■ Notification to Labor Dept-Works Commencement																													
1150	Submit Risk Ass to MTR	21	28FEB11	20MAR11	■ Submit Risk Ass to MTR																													
1260	Erect Hoarding	30	28FEB11	29MAR11	■ Erect Hoarding																													
1270	Demarcation of Marine Site Boundary	21	01MAR11	21MAR11	■ Demarcation of Marine Site Boundary																													
1280	Working Site Office establishment	14	27JAN11	09FEB11	■ Working Site Office establishment																													
<b>Monitoring</b>																																		
1160	Takeover monitoring system from C1	0	21MAR11 *		◆ Takeover monitoring system from C1																													
1180	Commence Monitoring- ADMS,etc	0	21MAR11		◆ Commence Monitoring- ADMS,etc																													
<b>Dredging Works</b>																																		
1070	Submit Dredging MS	30	18FEB11	19MAR11	■ Submit Dredging MS																													
1075	Acceptance of Dredging MS	0		19MAR11	◆ Acceptance of Dredging MS																													
1078	Initial Hydrographic Survey	1	20MAR11	20MAR11	■ Initial Hydrographic Survey																													
1200	Initial Dredging Works for Piling	15	22MAR11	05APR11	■ Initial Dredging Works for Piling																													
1210	Final Hydrographic survey	3	07MAY12	09MAY12	■ Final Hydrographic survey																													
1220	Final Dredging Works	7	10MAY12	16MAY12	■ Final Dredging Works																													
1230	Confirmation Hydrographic survey	70	17MAY12	25JUL12	■ Confirmation Hydrographic survey																													
<b>Piling Works</b>																																		
1240	Submit stage platform MS	30	10FEB11	11MAR11	■ Submit stage platform MS																													
1250	Submit piling MS	30	10FEB11	11MAR11	■ Submit piling MS																													
P1000	Erect temporary Piling Platform	120	06APR11	03AUG11	■ Erect temporary Piling Platform																													
P1020	Pre-drilling	150	06JUN11	02NOV11	■ Pre-drilling																													
P1040	Bored Piles Construction and Testing	250	06JUL11	11MAR12	■ Bored Piles Construction and Testing																													
P1060	Drive Sheet piles along Bored piles	140	03NOV11	21MAR12	■ Drive Sheet piles along Bored piles																													
P1080	Dismantle Temporary Piling Platform	50	25FEB12	14APR12	■ Dismantle Temporary Piling Platform																													
P1100	Dive sheet piles beyond precast seawall	90	17JAN12	15APR12	■ Dive sheet piles beyond precast seawall																													
P1120	Trim pilehead to cut-off level	210	29SEP11	25APR12	■ Trim pilehead to cut-off level																													
P1140	Cut steel casing of bore piles	210	06OCT11	02MAY12	■ Cut steel casing of bore piles																													
P1160	Cut sheet piles to design level for box units	120	08JAN12	06MAY12	■ Cut sheet piles to design level for box units																													

Start date 20JAN11  
 Finish date 19DEC12  
 Data date 20JAN11  
 Run date 05MAR11  
 Page number 1A  
 © Primavera Systems, Inc.

Contract no. HK/2010/06  
 Wan Chai Development Phase II- Central-Wan Chai By pass over MTR Tsuen Wan Line

GAMMON-LEADER JV

Works Schedule of Marine Works for EP-356/2009

- Early bar
- Progress bar
- Critical bar
- Summary bar
- ◆ Start milestone point
- ◆ Finish milestone point

Activity ID	Activity Name	Rem Dur	Start	Finish	2012													
					September					October				November			December	
					0	27	03	10	17	24	01	08	15	22	29	05	12	19
<b>3MRP - SEP 2012 to DEC 2012</b>																		
<b>02 - PRE-CONSTRUCTION WORKS</b>																		
<b>02.2 - Contractor's Submission</b>																		
0220-1250	Concrete Ready Mix/Design Mix - Concrete Plant Trials & Approval	8	04-Aug-11 A	27-Sep-12	Concrete Ready Mix/Design Mix - Concrete Plant Trials & Approval													
0220-1300	Drainage Pipes & Materials - Procurement & Delivery	14	20-Jul-12 A	03-Oct-12	Drainage Pipes & Materials - Procurement & Delivery													
0220-1360	Tunnel Structures Materials - Submission	21	19-Jul-12 A	10-Oct-12	Tunnel Structures Materials - Submission													
0220-1370	Tunnel Structures Materials - ER Review/Comment	28	11-Oct-12	07-Nov-12	Tunnel Structures Materials - ER Review/Comment													
0220-1380	Tunnel Structures Materials - Resubmission	14	08-Nov-12	21-Nov-12	Tunnel Structures Materials - Resubmission													
0220-1390	Tunnel Structures Materials - ER Approval	21	22-Nov-12	12-Dec-12	Tunnel Structures Materials - ER Approval													
0220-1470	Bridge Bearing - ER Review/Comment	0	27-Jul-12 A	05-Sep-12 A	Bridge Bearing - ER Review/Comment													
0220-1480	Bridge Bearing - Resubmission	0	09-Aug-12 A	10-Sep-12 A	Bridge Bearing - Resubmission													
0220-1490	Bridge Bearing - ER Approval	19	11-Sep-12 A	08-Oct-12	Bridge Bearing - ER Approval													
0220-1500	Bridge Bearing - Procurement & Delivery	195	09-Oct-12	21-Apr-13*	Bridge Bearing - Procurement & Delivery													
<b>02.3 - Method Statement / Shop Drawings</b>																		
0230-1280	MS Cut & Cover Tunnel ELS - Resubmission	14	13-Jul-12 A	03-Oct-12	MS Cut & Cover Tunnel ELS - Resubmission													
0230-1290	MS Cut & Cover Tunnel ELS - ER Approval	14	07-Aug-12 A	17-Oct-12	MS Cut & Cover Tunnel ELS - ER Approval													
0230-1350	MS Pre-cast Segment Launching - ER Review & Comment	28	20-Sep-12 A	17-Oct-12	MS Pre-cast Segment Launching - ER Review & Comment													
0230-1360	MS Pre-cast Segment Launching - Resubmission	28	18-Oct-12	14-Nov-12	MS Pre-cast Segment Launching - Resubmission													
0230-1370	MS Pre-cast Segment Launching - ER Approval	28	15-Nov-12	12-Dec-12	MS Pre-cast Segment Launching - ER Approval													
0230-1470	MS Stressing Tendons - ER Review & Comment	0	08-Jun-12 A	27-Aug-12 A	MS Stressing Tendons - ER Review & Comment													
0230-1480	MS Stressing Tendons - Resubmission	14	08-Aug-12 A	03-Oct-12	MS Stressing Tendons - Resubmission													
0230-1490	MS Stressing Tendons - ER Approval	28	04-Oct-12	31-Oct-12	MS Stressing Tendons - ER Approval													
0230-1560	MS Precasting of Bridge Segment & Beam - Resubmission	9	02-Apr-12 A	28-Sep-12	MS Precasting of Bridge Segment & Beam - Resubmission													
0230-1570	MS Precasting of Bridge Segment & Beam - ER Approval	20	12-Apr-12 A	09-Oct-12	MS Precasting of Bridge Segment & Beam - ER Approval													
<b>02.4 - Contractor's Design and Build Items</b>																		
0240-1010	Temp Bridge "TA" Design - Prep & Submit	60	16-Dec-11 A	18-Nov-12	Temp Bridge "TA" Design - Prep & Submit													
0240-1020	Temp Bridge "TA" Design - ER review and comment	28	19-Nov-12	16-Dec-12	Temp Bridge "TA" Design - ER review and comment													
0240-1105	Int. Noise Enclosure Structural Design - Submission	60	20-Sep-12*	18-Nov-12	Int. Noise Enclosure Structural Design - Submission													
0240-1110	Int. Noise Enclosure Structural Design - ER Review/Resubmission	36	19-Nov-12	24-Dec-12	Int. Noise Enclosure Structural Design - ER Review/Resubmission													
0240-1126	Noise Barrier Design Structural Design - Submission	60	08-Oct-12*	06-Dec-12	Noise Barrier Design Structural Design - Submission													
0240-1127	Noise Barrier Design Structural Design - ER Review/Resubmission	36	07-Dec-12	11-Jan-13	Noise Barrier Design Structural Design - ER Review/Resubmission													
0240-1150	Perm. Noise Enclosure Structural Design - Submission	60	20-Sep-12	18-Nov-12	Perm. Noise Enclosure Structural Design - Submission													
0240-1160	Perm. Noise Enclosure Structural Design - ER Review/Resubmission	36	19-Nov-12	24-Dec-12	Perm. Noise Enclosure Structural Design - ER Review/Resubmission													
0240-1376	Cut & Cover Tunnel ELS Design - ER Review & Resubmission	18	14-Jun-12 A	07-Oct-12	Cut & Cover Tunnel ELS Design - ER Review & Resubmission													
0240-1377	Cut & Cover Tunnel ELS Design - ER Approval	21	08-Oct-12	28-Oct-12	Cut & Cover Tunnel ELS Design - ER Approval													
0240-1379	Cut & Cover Tunnel ELS Fabrication	60	29-Oct-12	27-Dec-12	Cut & Cover Tunnel ELS Fabrication													
<b>02.5 - Bridge Segment/Beam Off-site Precasting</b>																		
0250-1055	Segment/Beam - Mould Fabrication - Type T	30	14-May-12 A	19-Oct-12	Segment/Beam - Mould Fabrication - Type T													
0250-1060	Segment/Beam - Precasting of 1st Segment / Trial Segment	10	20-Aug-12 A	29-Sep-12	Segment/Beam - Precasting of 1st Segment / Trial Segment													
0250-1100	Segment/Beam - Geometry Control Design Approval	24	14-Dec-11 A	13-Oct-12	Segment/Beam - Geometry Control Design Approval													
0250-1500	Ready for Mass Production of Bridge Segment/Beam	0		15-Oct-12*	Ready for Mass Production of Bridge Segment/Beam													
0250-1600.01	Bridge D3 Precast Segment Casting Pier D09 (17 segments)	35	15-Oct-12	19-Nov-12	Bridge D3 Precast Segment Casting Pier D09 (17 segments)													
0250-1600.03	Bridge D3 Precast Segment Casting Pier D08 (8 segments)	17	19-Nov-12	06-Dec-12	Bridge D3 Precast Segment Casting Pier D08 (8 segments)													
0250-1600.05	Bridge D3 Precast Segment Casting Pier D10 (17 segments)	35	19-Nov-12	24-Dec-12	Bridge D3 Precast Segment Casting Pier D10 (17 segments)													

- Remaining Level of Effort
- Actual Level of Effort
- Actual Work
- Remaining Work
- Critical Remaining Work
- ◆ Milestone

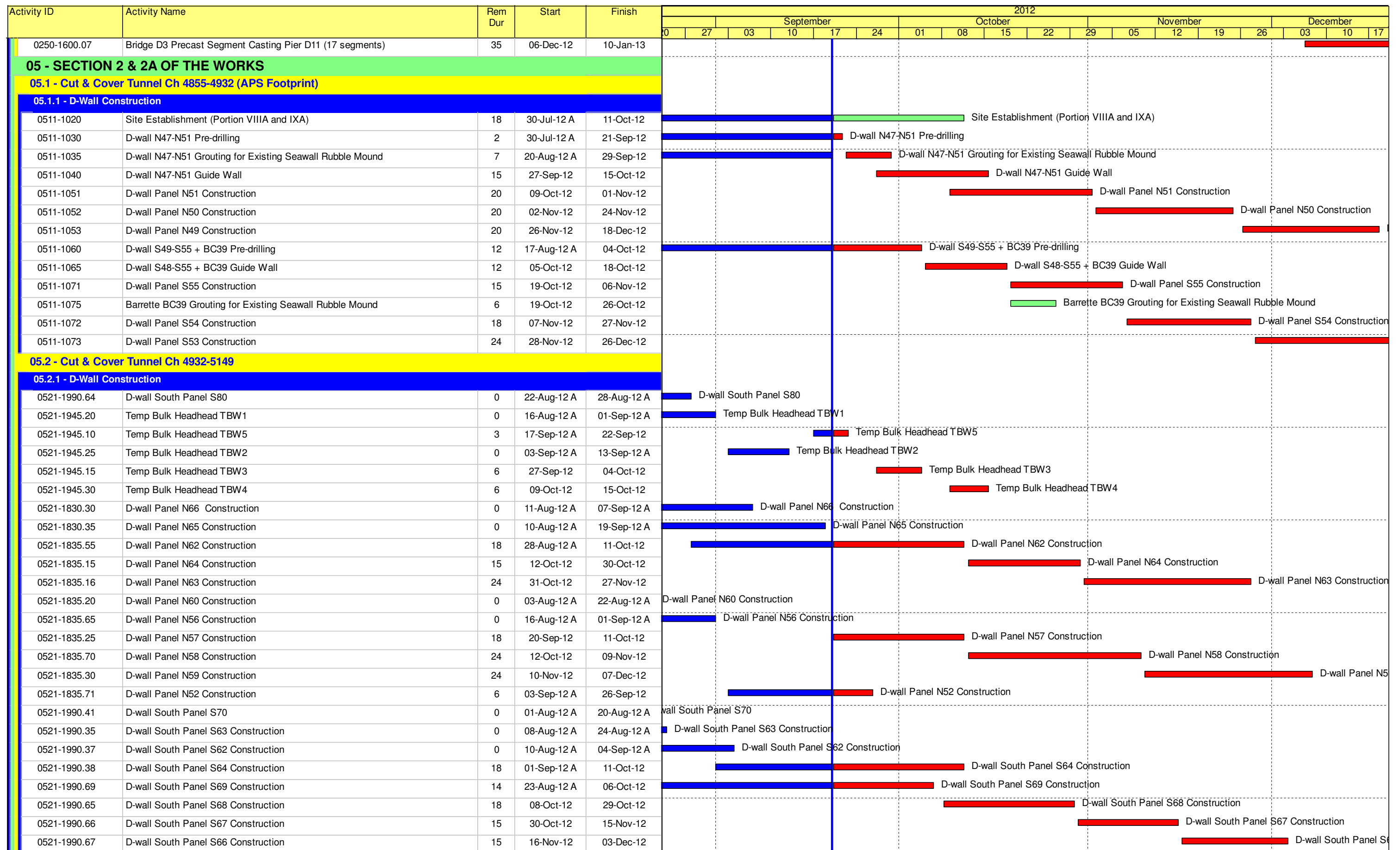
**Contract HY/2009/19**

**Three Month Rolling Programme (20 SEP 2012 to 19 DEC 2012)**

3MRP

3MRP - SEP 2012 to DEC 2012

Page 1 of 6



- Remaining Level of Effort
- Actual Level of Effort
- Actual Work
- Remaining Work
- Critical Remaining Work
- Milestone

**Contract HY/2009/19**

**Three Month Rolling Programme (20 SEP 2012 to 19 DEC 2012)**

3MRP

3MRP - SEP 2012 to DEC 2012





Activity ID	Activity Name	Rem Dur	Start	Finish	2012																							
					September						October						November						December					
					0	27	03	10	17	24	01	08	15	22	29	05	12	19	26	03	10	17						
0530-3308	1500 dia. Storm Drain - Backfill + Extract Sheetpiles (S89 to S94)	9	10-Dec-12	19-Dec-12																								
0530-3310	1500 dia. Storm Drain - Sheetpiles + ELS (S83 to S89)	12	19-Nov-12	01-Dec-12																								
0530-3325	1500 dia. Storm Drain - Laying of Pipe (S83 to S89)	6	03-Dec-12	08-Dec-12																								
0530-3326	1500 dia. Storm Drain - Construct Manhole (S83 to S89)	12	10-Dec-12	22-Dec-12																								
0530-3320	1500 dia. Temp Steel Pipe - Site Clearance + Sheet Piling	15	17-Sep-12 A	08-Oct-12																								
0530-3338	1500 dia. Temp Steel Pipe - ELS	12	09-Oct-12	22-Oct-12																								
0530-3348	1500 dia. Temp Steel Pipe - Pipe Laying	12	24-Oct-12	06-Nov-12																								
0530-3358	1500 dia. Temp Steel Pipe - Connect to Existing Box Culvert	18	07-Nov-12	27-Nov-12																								
<b>06 - SECTION 3 OF THE WORKS</b>																												
<b>06.2 - Box Culvert U1</b>																												
0620-2358	U1 Pre-bored H-pile Test Set-up	0	06-Aug-12 A	08-Sep-12 A																								
0620-2359	U1 Pre-bored H-pile Load Test	0	10-Sep-12 A	13-Sep-12 A																								
0620-2390	U1 Bay 5 to 8 Sheet Piles + ELS	21	30-Jul-12 A	15-Oct-12																								
0620-2400	U1 Construct Bay 6	24	16-Oct-12	13-Nov-12																								
0620-2410	U1 Construct Bay 7	24	31-Oct-12	27-Nov-12																								
0620-2420	U1 Construct Bay 8	24	14-Nov-12	11-Dec-12																								
0620-2430	U1 Construct Bay 5	24	28-Nov-12	26-Dec-12																								
0620-2480	U1 Bay 11 and 12 Sheetpiles + ELS	24	16-Oct-12	13-Nov-12																								
0620-2490	U1 Construct Bay 12	24	14-Nov-12	11-Dec-12																								
0620-2500	U1 Construct Bay 11	24	28-Nov-12	26-Dec-12																								
<b>10 - SECTION X OF THE WORKS</b>																												
<b>10.1 - E/B Bridges (Bridge D, E and F)</b>																												
<b>10.1.1 - Marine Pier Construction</b>																												
<b>Pier F03 to F15</b>																												
1011-1750.10	Pier F3 Dolphin Socketed H-Pile 1	3	16-Aug-12 A	22-Sep-12																								
1011-1750.20	Pier F3 Dolphin Socketed H-Pile 2	5	17-Aug-12 A	25-Sep-12																								
1011-1750.30	Pier F3 Dolphin Socketed H-Pile 3	8	18-Aug-12 A	28-Sep-12																								
1011-1990	Dismantle Piling Platform at Pier F3	6	04-Oct-12	10-Oct-12																								
1011-1995	Fabrication of Marine Pile Cap Cofferdam	18	04-Oct-12	25-Oct-12																								
1011-2150	F3 Pile Cap Construction	18	26-Oct-12	15-Nov-12																								
1011-2160	F3 Pier/Column Construction	12	16-Nov-12	29-Nov-12																								
1011-2170	F3 Crosshead Construction + Bearing	24	30-Nov-12	28-Dec-12																								
1011-1850.10	Pier F4 Dolphin Socketed H-Pile 1	0	25-May-12 A	31-Aug-12 A																								
1011-1850.20	Pier F4 Dolphin Socketed H-Pile 2	0	04-Jun-12 A	28-Aug-12 A																								
1011-1850.30	Pier F4 Dolphin Socketed H-Pile 3	0	25-Jun-12 A	04-Sep-12 A																								
1011-2000	Dismantle Piling Platform at Pier F4	6	04-Oct-12	10-Oct-12																								
1011-2180	F4 Pile Cap Construction	18	26-Oct-12	15-Nov-12																								
1011-2190	F4 Pier/Column Construction	12	16-Nov-12	29-Nov-12																								
1011-2200	F4 Crosshead Construction + Bearing	24	30-Nov-12	28-Dec-12																								
1011-1810.10	Pier F5 Dolphin Socketed H-Pile 1	0	18-Jul-12 A	10-Sep-12 A																								
1011-1810.20	Pier F5 Dolphin Socketed H-Pile 3	0	19-Jul-12 A	17-Sep-12 A																								
1011-1810.40	Pier F5 Dolphin Socketed H-Pile 5	0	17-Jul-12 A	13-Sep-12 A																								
1011-1810.30	Pier F5 Dolphin Socketed H-Pile 2	1	04-Aug-12 A	20-Sep-12																								
1011-1810.50	Pier F5 Dolphin Socketed H-Pile 4	12	28-Sep-12	12-Oct-12																								

- Remaining Level of Effort
- Actual Level of Effort
- Actual Work
- Remaining Work
- Critical Remaining Work
- ◆ Milestone

**Contract HY/2009/19**  
**Three Month Rolling Programme (20 SEP 2012 to 19 DEC 2012)**

3MRP  
3MRP - SEP 2012 to DEC 2012  
Page 4 of 6

Activity ID	Activity Name	Rem Dur	Start	Finish	2012																	
					September						October				November				December			
					0	27	03	10	17	24	01	08	15	22	29	05	12	19	26	03	10	17
1011-1810.60	Pier F5 Dolphin Socketed H-Pile 6	12	13-Oct-12	27-Oct-12																		
1011-2010	Dismantle Piling Platform at Pier F5	6	29-Oct-12	03-Nov-12																		
1011-2210	F5 Pile Cap Construction	18	16-Nov-12	06-Dec-12																		
1011-2220	F5 Pier/Column Construction	12	07-Dec-12	20-Dec-12																		
1011-1790.10	Pier F6 Dolphin Socketed H-Pile 1	15	24-Aug-12 A	08-Oct-12																		
1011-1790.20	Pier F6 Dolphin Socketed H-Pile 2	17	24-Aug-12 A	10-Oct-12																		
1011-1790.30	Pier F6 Dolphin Socketed H-Pile 3	19	25-Aug-12 A	12-Oct-12																		
1011-1790.40	Pier F6 Dolphin Socketed H-Pile 5	21	25-Aug-12 A	15-Oct-12																		
1011-1790.50	Pier F6 Dolphin Socketed H-Pile 4	12	16-Oct-12	30-Oct-12																		
1011-1790.60	Pier F6 Dolphin Socketed H-Pile 6	12	31-Oct-12	13-Nov-12																		
1011-2020	Dismantle Piling Platform at Pier F6	6	14-Nov-12	20-Nov-12																		
1011-2240	F6 Pile Cap Construction	18	21-Nov-12	11-Dec-12																		
1011-2250	F6 Pier/Column Construction	12	12-Dec-12	26-Dec-12																		
1011-1910.10	Pier F7 Dolphin Socketed H-Pile 1	15	20-Sep-12	08-Oct-12																		
1011-1910.20	Pier F7 Dolphin Socketed H-Pile 2	18	20-Sep-12	11-Oct-12																		
1011-1910.30	Pier F7 Dolphin Socketed H-Pile 3	21	24-Sep-12	18-Oct-12																		
1011-1910.40	Pier F7 Dolphin Socketed H-Pile 5	24	24-Sep-12	22-Oct-12																		
1011-1910.50	Pier F7 Dolphin Socketed H-Pile 4	12	24-Oct-12	06-Nov-12																		
1011-1910.60	Pier F7 Dolphin Socketed H-Pile 6	12	07-Nov-12	20-Nov-12																		
1011-2030	Dismantle Piling Platform at Pier F7	6	21-Nov-12	27-Nov-12																		
1011-2270	F7 Pile Cap Construction	18	12-Dec-12	03-Jan-13																		
1011-1862.10	Pier F8 Dolphin Socketed H-Pile 1	10	14-Aug-12 A	02-Oct-12																		
1011-1862.11	Pier F8 Dolphin Socketed H-Pile 2	12	14-Aug-12 A	04-Oct-12																		
1011-1862.12	Pier F8 Dolphin Socketed H-Pile 3	14	15-Aug-12 A	06-Oct-12																		
1011-1862.13	Pier F8 Dolphin Socketed H-Pile 5	16	15-Aug-12 A	09-Oct-12																		
1011-1862.14	Pier F8 Dolphin Socketed H-Pile 4	12	21-Nov-12	04-Dec-12																		
1011-1862.15	Pier F8 Dolphin Socketed H-Pile 6	12	05-Dec-12	18-Dec-12																		
1011-1806	Pier F9 Marine Bored Pile (Low Headroom)	9	20-Aug-12 A	29-Sep-12																		
1011-2120	Marine bored pile testing F9	18	02-Oct-12	22-Oct-12																		
1011-1802	Pier F9 Dolphin Socketed H-Pile (6 nos.)	42	14-Nov-12	03-Jan-13																		
1011-1981	Pier F10 Marine Bored Pile (Low Headroom)	24	07-Sep-12 A	18-Oct-12																		
1011-2125	Marine bored pile testing F10	18	19-Oct-12	09-Nov-12																		
1011-2130	Marine bored pile testing F11	12	20-Sep-12	04-Oct-12																		
1011-1827	Pier F12 Marine Bored Pile (Low Headroom)	35	19-Oct-12	29-Nov-12																		
1011-2135	Marine bored pile testing F12	18	30-Nov-12	20-Dec-12																		
1011-1900	Pier F13 Marine Bored Pile	0	08-Aug-12 A	31-Aug-12 A																		
1011-1905	Pier F13 Marine Bored Pile (Low Headroom)	35	30-Nov-12	11-Jan-13																		
1011-1785	Pier F14 Marine Bored Pile	0	14-Aug-12 A	04-Sep-12 A																		
<b>Pier F01 to F02</b>																						
1011-2752	Marine bored pile F1A-4	0	04-Aug-12 A	23-Aug-12 A																		
1011-2753	Marine bored pile F1A-3	0	25-Aug-12 A	06-Sep-12 A																		
1011-2730	Dolphin socketed H-pile pier F1-P1	21	20-Sep-12	15-Oct-12																		
1011-2732	Dolphin socketed H-pile pier F1-P2	24	20-Sep-12	18-Oct-12																		
1011-2735	Dolphin socketed H-pile pier F1-P3	27	20-Sep-12	22-Oct-12																		

- Remaining Level of Effort
- Actual Level of Effort
- Actual Work
- Remaining Work
- Critical Remaining Work
- Milestone

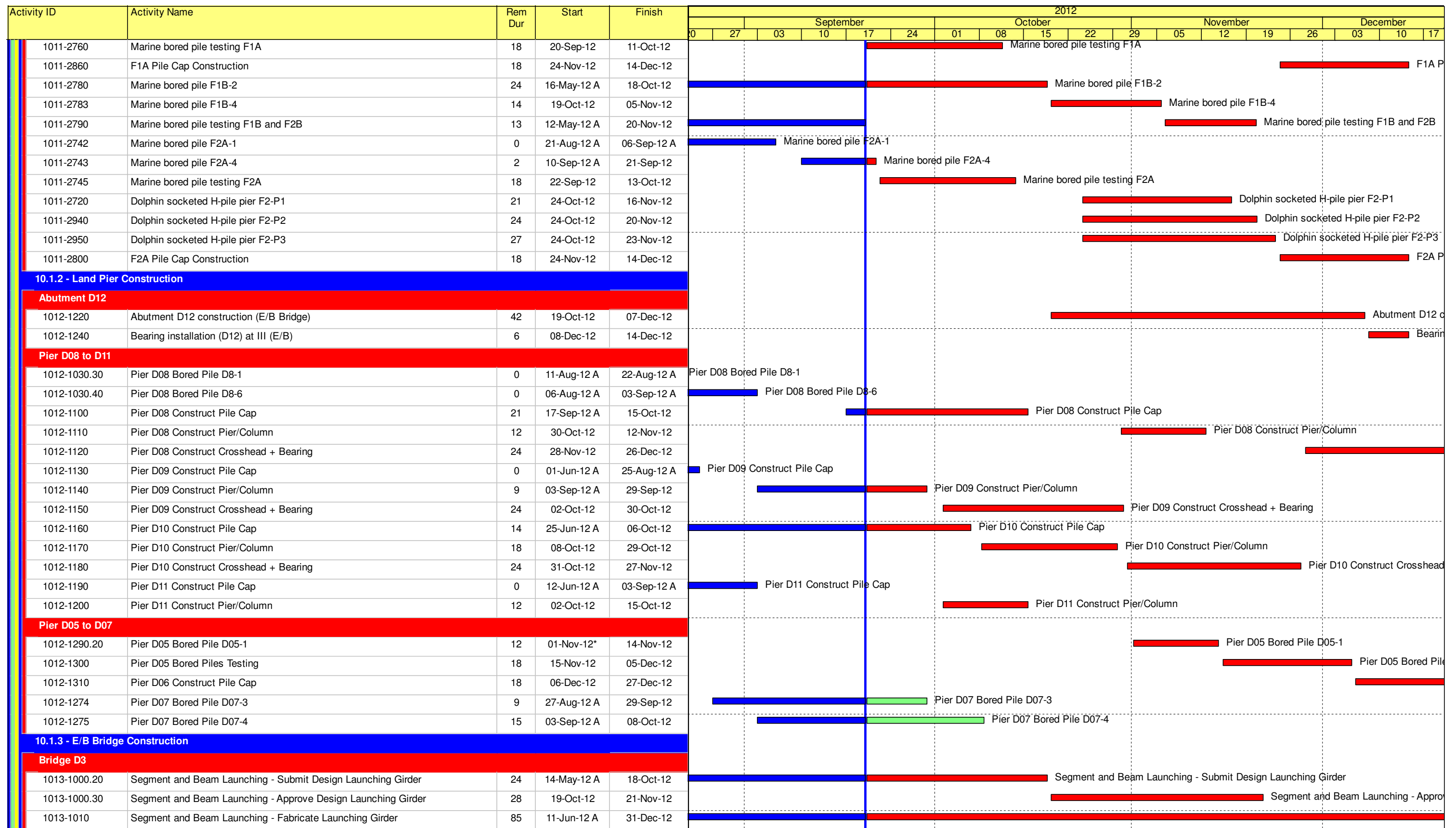
**Contract HY/2009/19**

**Three Month Rolling Programme (20 SEP 2012 to 19 DEC 2012)**

3MRP

3MRP - SEP 2012 to DEC 2012

Page 5 of 6



- Remaining Level of Effort
- Actual Level of Effort
- Actual Work
- Remaining Work
- Critical Remaining Work
- ◆ Milestone

**Contract HY/2009/19**

**Three Month Rolling Programme (20 SEP 2012 to 19 DEC 2012)**

3MRP

3MRP - SEP 2012 to DEC 2012

Page 6 of 6

Activity ID	Activity Name	Rem Dur	Start	Finish	2012							2013							
					December				January			February			March				
					9	26	03	10	17	24	31	07	14	21	28	04	11	18	25
<b>3MRP - DEC 2012 to Mar 2013</b>																			
<b>02 - PRE-CONSTRUCTION WORKS</b>																			
<b>02.2 - Contractor's Submission</b>																			
0220-1360	Tunnel Structures Materials - Submission	12	19-Jul-12 A	31-Dec-12	Tunnel Structures Materials - Submission														
0220-1370	Tunnel Structures Materials - ER Review/Comment	28	01-Jan-13	28-Jan-13	Tunnel Structures Materials - ER Review/Comment														
0220-1380	Tunnel Structures Materials - Resubmission	14	29-Jan-13	11-Feb-13	Tunnel Structures Materials - Resubmission														
0220-1390	Tunnel Structures Materials - ER Approval	21	12-Feb-13	04-Mar-13	Tunnel Structures Materials - ER Approval														
0220-1500	Bridge Bearing - Procurement & Delivery (D8/D9/D10)	30	24-Sep-12 A	18-Jan-13*	Bridge Bearing - Procurement & Delivery (D8/D9/D10)														
0220-1400	Tunnel Structures Materials - Procurement & Delivery	60	05-Mar-13	03-May-13	Tunnel Structures Materials - Procurement & Delivery														
<b>02.3 - Method Statement / Shop Drawings</b>																			
0230-1280	MS Cut & Cover Tunnel ELS - Resubmission	12	13-Jul-12 A	31-Dec-12	MS Cut & Cover Tunnel ELS - Resubmission														
0230-1290	MS Cut & Cover Tunnel ELS - ER Approval	12	07-Aug-12 A	12-Jan-13	MS Cut & Cover Tunnel ELS - ER Approval														
0230-1350	MS Pre-cast Segment Launching - ER Review & Comment	9	20-Sep-12 A	28-Dec-12	MS Pre-cast Segment Launching - ER Review & Comment														
0230-1360	MS Pre-cast Segment Launching - Resubmission	28	29-Dec-12	25-Jan-13	MS Pre-cast Segment Launching - Resubmission														
0230-1370	MS Pre-cast Segment Launching - ER Approval	28	26-Jan-13	22-Feb-13	MS Pre-cast Segment Launching - ER Approval														
0230-1480	MS Stressing Tendons - Resubmission	9	08-Aug-12 A	28-Dec-12	MS Stressing Tendons - Resubmission														
0230-1490	MS Stressing Tendons - ER Approval	28	29-Dec-12	25-Jan-13	MS Stressing Tendons - ER Approval														
0230-1580	MS Interim & Permanent Noise Semi Enclosure - Submission	28	04-Mar-13*	31-Mar-13	MS Interim & Permanent Noise Semi Enclosure - Submission														
0230-1320	MS Pre-casting Beam - Resubmission	12	03-Dec-12 A	31-Dec-12	MS Pre-casting Beam - Resubmission														
0230-1330	MS Pre-casting Beam - ER Approval	21	01-Jan-13	21-Jan-13	MS Pre-casting Beam - ER Approval														
<b>02.4 - Contractor's Design and Build Items</b>																			
0240-1010	Temp Bridge "TA" Design - Prep & Submit	36	16-Dec-11 A	24-Jan-13	Temp Bridge "TA" Design - Prep & Submit														
0240-1020	Temp Bridge "TA" Design - ER review and comment	28	25-Jan-13	21-Feb-13	Temp Bridge "TA" Design - ER review and comment														
0240-1030	Temp Bridge "TA" Design - Resubmission	45	22-Feb-13	07-Apr-13	Temp Bridge "TA" Design - Resubmission														
0240-1041	Temp Bridge "TD" Design - Submission	28	04-Feb-13*	03-Mar-13	Temp Bridge "TD" Design - Submission														
0240-1105	Int. Noise Enclosure Structural Design - Submission	60	01-Mar-13*	29-Apr-13	Int. Noise Enclosure Structural Design - Submission														
0240-1126	Noise Barrier Design Structural Design - Submission	60	01-Mar-13*	29-Apr-13	Noise Barrier Design Structural Design - Submission														
0240-1150	Perm. Noise Enclosure Structural Design - Submission	60	01-Mar-13	29-Apr-13	Perm. Noise Enclosure Structural Design - Submission														
0240-1270	Landscaping Design - Submission	90	01-Mar-13*	29-May-13	Landscaping Design - Submission														
0240-1376	Cut & Cover Tunnel ELS Design - ER Review & Resubmission	7	14-Jun-12 A	26-Dec-12	Cut & Cover Tunnel ELS Design - ER Review & Resubmission														
0240-1377	Cut & Cover Tunnel ELS Design - ER Approval	15	27-Dec-12	10-Jan-13	Cut & Cover Tunnel ELS Design - ER Approval														
0240-1379	Cut & Cover Tunnel ELS Fabrication	60	11-Jan-13	11-Mar-13	Cut & Cover Tunnel ELS Fabrication														
0240-1050	Temp Bridge "TB" & "TC" Design - Prep & Submit	120	01-Mar-13*	28-Jun-13	Temp Bridge "TB" & "TC" Design - Prep & Submit														
0240-1042	Temp Bridge "TD" Design - ER review and comment	28	04-Mar-13	31-Mar-13	Temp Bridge "TD" Design - ER review and comment														
<b>02.5 - Bridge Segment/Beam Off-site Precasting</b>																			
0250-1600.02	Bridge D3 Pier D09 Precasting Segment (7-9) - Mould S1	0	16-Nov-12 A	05-Dec-12 A	Bridge D3 Pier D09 Precasting Segment (7-9) - Mould S1														
0250-1600.03	Bridge D3 Pier D09 Precasting Segment (9-15) - Mould S1	12	06-Dec-12 A	31-Dec-12	Bridge D3 Pier D09 Precasting Segment (9-15) - Mould S1														
0250-1600.04	Bridge D3 Pier D09 Precasting Segment (16-17) - Mould S1	5	01-Jan-13	05-Jan-13	Bridge D3 Pier D09 Precasting Segment (16-17) - Mould S1														
0250-1600.06	Bridge D3 Pier D10 Precasting Segment (1-17) - Mould S1	47	06-Jan-13	21-Feb-13	Bridge D3 Pier D10 Precasting Segment (1-17) - Mould S1														
0250-1600.07	Bridge D3 Pier D11 Precasting Segment (1-17) - Mould S1	47	22-Feb-13	09-Apr-13	Bridge D3 Pier D11 Precasting Segment (1-17) - Mould S1														
0250-1650.01	Bridge D3 Pier D08 Precasting Segment (1-8) - Mould S2	29	03-Jan-13*	31-Jan-13	Bridge D3 Pier D08 Precasting Segment (1-8) - Mould S2														
0250-1650.02	Bridge D3 Pier D12 Precasting Segment (1-4) - Mould S2	18	01-Feb-13	18-Feb-13	Bridge D3 Pier D12 Precasting Segment (1-4) - Mould S2														
0250-1650.03	Bridge F1 Pier F03 Precasting Segment (1-5) - Mould S2	21	19-Feb-13	11-Mar-13	Bridge F1 Pier F03 Precasting Segment (1-5) - Mould S2														
0250-1650.04	Bridge F1 Pier F03 Precasting Segment (1-5) - Mould S2	21	12-Mar-13	01-Apr-13	Bridge F1 Pier F03 Precasting Segment (1-5) - Mould S2														

- Remaining Level of Effort
- Actual Level of Effort
- Actual Work
- Remaining Work
- Critical Remaining Work
- ◆ Milestone

**Contract HY/2009/19**

**Three Month Rolling Programme (20 DEC 2012 to 19 MAR 2013)**

3MRP

3MRP - DEC 2012 to Mar 2013

Page 1 of 6

Activity ID	Activity Name	Rem Dur	Start	Finish	2012												2013					
					December						January						February			March		
					9	26	03	10	17	24	31	07	14	21	28	04	11	18	25	04	11	18
0250-1695	Bridge Precast Beam Mould Fabrication and Assembly	0	29-Oct-12 A	13-Dec-12 A	Bridge Precast Beam Mould Fabrication and Assembly																	
0250-1700	Bridge Precast Beam Casting Bridge F4/F5 ( 10 nos)	42	26-Jan-13*	08-Mar-13	Bridge Precast																	
<b>05 - SECTION 2 &amp; 2A OF THE WORKS</b>																						
<b>05.1 - Cut &amp; Cover Tunnel Ch 4855-4932 (APS Footprint)</b>																						
<b>05.1.1 - D-Wall Construction</b>																						
0511-1055	D-wall Panel N47 Construction	0	09-Nov-12 A	23-Nov-12 A	D-wall Panel N47 Construction																	
0511-1052	D-wall Panel N50 Construction	7	26-Nov-12 A	28-Dec-12	D-wall Panel N50 Construction																	
0511-1053	D-wall Panel N48 Construction	12	29-Dec-12	12-Jan-13	D-wall Panel N48 Construction																	
0511-1054	D-wall Panel N49 Construction	18	15-Jan-13	04-Feb-13	D-wall Panel N49 Construction																	
0511-1065	D-wall S48-S55 Guide Wall	0	20-Sep-12 A	05-Dec-12 A	D-wall S48-S55 Guide Wall																	
0511-1072	D-wall Panel S54 Construction	4	10-Dec-12 A	24-Dec-12	D-wall Panel S54 Construction																	
0511-1073	D-wall Panel S49 Construction	18	26-Dec-12	16-Jan-13	D-wall Panel S49 Construction																	
0511-1074	D-wall Panel S53 Construction	20	17-Jan-13	08-Feb-13	D-wall Panel S53 Construction																	
0511-1076	D-wall Panel S50 Construction	15	13-Feb-13	01-Mar-13	D-wall Panel S50 Construc																	
0511-1077	D-wall Panel S51 Construction	20	04-Mar-13	26-Mar-13	D-wall Panel S51 Construction																	
<b>05.2 - Cut &amp; Cover Tunnel Ch 4932-5149</b>																						
<b>05.2.1 - D-Wall Construction</b>																						
0521-1835.30	D-wall Panel N59 Construction	0	10-Nov-12 A	11-Dec-12 A	D-wall Panel N59 Construction																	
0521-1990.65	D-wall South Panel S68 Construction	0	09-Oct-12 A	14-Dec-12 A	D-wall South Panel S68 Construction																	
0521-1990.66	D-wall South Panel S67 Construction	15	28-Dec-12	15-Jan-13	D-wall South Panel S67 Construction																	
0521-1990.67	D-wall South Panel S65 Construction	21	17-Jan-13	13-Feb-13	D-wall South Panel S65 Construction																	
0521-1990.68	D-wall South Panel S66 Construction	15	15-Feb-13	04-Mar-13	D-wall South Panel S66 Construction																	
0521-1990.70	D-wall South Panel S61 Construction	0	01-Nov-12 A	03-Dec-12 A	D-wall South Panel S61 Construction																	
0521-1990.71	D-wall South Panel S57 Construction	0	14-Nov-12 A	08-Dec-12 A	D-wall South Panel S57 Construction																	
0521-1990.72	D-wall South Panel S58 Construction	15	18-Dec-12 A	08-Jan-13	D-wall South Panel S58 Construction																	
0521-1990.73	D-wall South Panel S59 Construction	24	09-Jan-13	05-Feb-13	D-wall South Panel S59 Construction																	
0521-1990.74	D-wall South Panel S60 Construction	24	07-Feb-13	09-Mar-13	D-wall South P																	
0521-1750.45	D-wall Panel N86 Construction	0	05-Dec-12 A	18-Dec-12 A	D-wall Panel N86 Construction																	
0521-1710.35	D-wall Panel S94 Construction	8	14-Dec-12 A	29-Dec-12	D-wall Panel S94 Construction																	
0521-1990.17	D-wall South Panel S99 Construction	18	22-Dec-12	14-Jan-13	D-wall South Panel S99 Construction																	
0521-1990.30	D-wall South Panel N92 Construction	18	02-Jan-13	22-Jan-13	D-wall South Panel N92 Construction																	
0521-1990.31	D-wall South Panel S108	0	12-Nov-12 A	05-Dec-12 A	D-wall South Panel S108																	
0521-1642	Construct Temporary End Wall (Sheet Piles) 2nd Layer	0	20-Nov-12 A	30-Nov-12 A	Construct Temporary End Wall (Sheet Piles) 2nd Layer																	
0521-1943	Construct Temporary End Wall (Sheet Piles) 3rd Layer	0	27-Nov-12 A	19-Dec-12 A	Construct Temporary End Wall (Sheet Piles) 3rd Layer																	
0521-1945	Sheet Pile + Pre-boring for Section with Obstruction	12	05-Jan-13	18-Jan-13	Sheet Pile + Pre-boring for Section with Obstruction																	
0521-1946	Grouting North Dwall and Sheetpiles Interface	9	12-Jan-13	22-Jan-13	Grouting North Dwall and Sheetpiles Interface																	
0521-2185	Grouting South Dwall and Sheetpiles Interface	9	23-Jan-13	01-Feb-13	Grouting South Dwall and Sheetpiles Interface																	
0521-2175	Pump Test C&C Tunnel East Part	18	02-Feb-13	26-Feb-13	Pump Test C&C Tunnel East P																	
<b>05.2.2 - Barrette Construction</b>																						
0522-2210.69	Barrette Pile BC60	0	19-Nov-12 A	28-Nov-12 A	Barrette Pile BC60																	
0522-2215.10	Bulkhead Wall BW1	6	27-Nov-12 A	27-Dec-12	Bulkhead Wall BW1																	
<b>05.2.3 - ELS</b>																						
0524-2872	King Post Installation (9 nos.)	27	20-Dec-12	22-Jan-13	King Post Installation (9 nos.)																	
0524-2875	ELS Dewatering System (62 nos.)	36	03-Dec-12 A	01-Feb-13	ELS Dewatering System (62 nos.)																	

- Remaining Level of Effort
- Actual Level of Effort
- Actual Work
- Remaining Work
- Critical Remaining Work
- ◆ Milestone

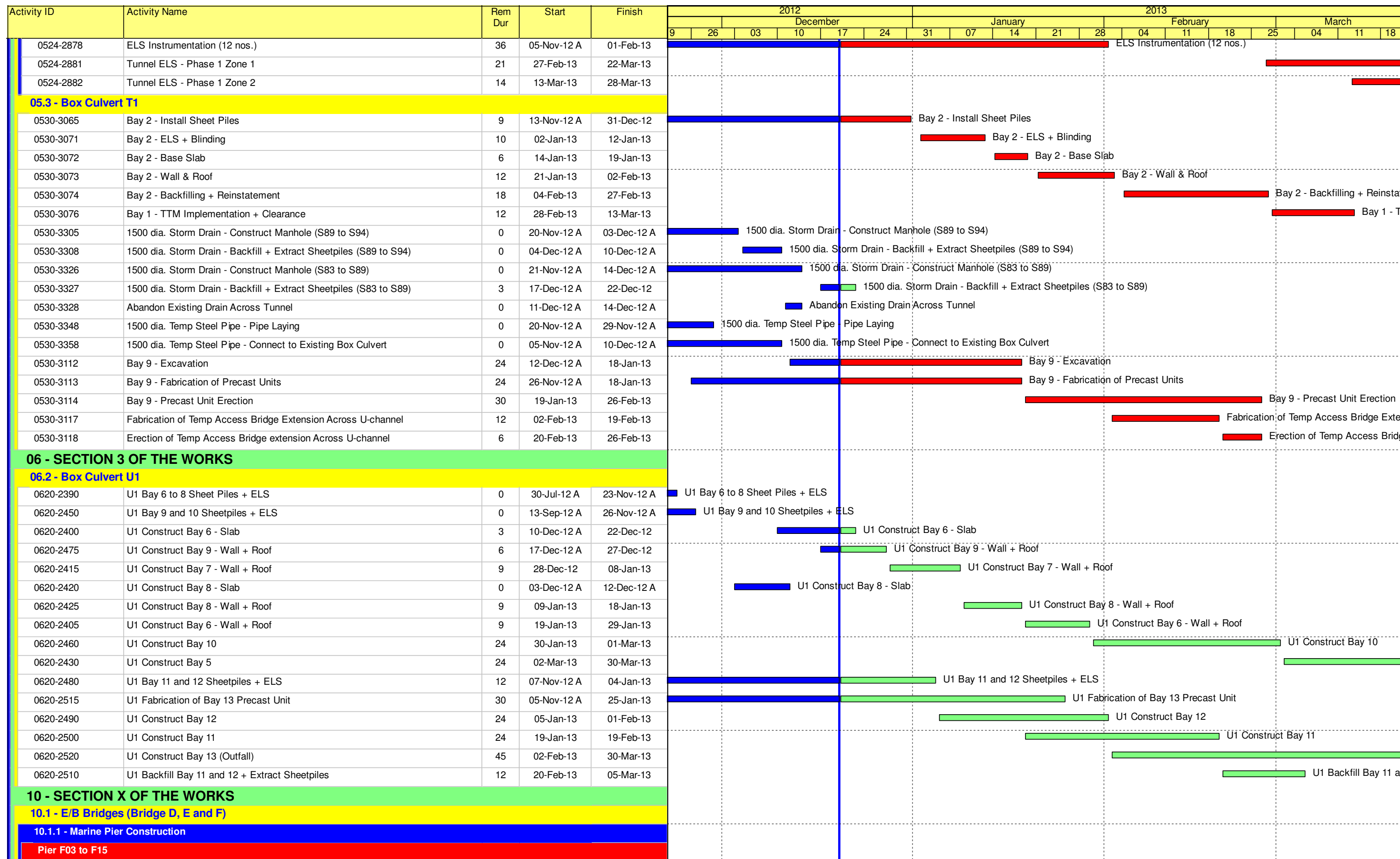
**Contract HY/2009/19**

**Three Month Rolling Programme (20 DEC 2012 to 19 MAR 2013)**

3MRP

3MRP - DEC 2012 to Mar 2013

Page 2 of 6



- Remaining Level of Effort
- Actual Level of Effort
- Actual Work
- Remaining Work
- Critical Remaining Work
- ◆ Milestone

**Contract HY/2009/19**

**Three Month Rolling Programme (20 DEC 2012 to 19 MAR 2013)**

3MRP

3MRP - DEC 2012 to Mar 2013

Page 3 of 6

Activity ID	Activity Name	Rem Dur	Start	Finish	2012												2013					
					December						January						February			March		
					9	26	03	10	17	24	31	07	14	21	28	04	11	18	25	04	11	18
1011-1995	Fabrication of Marine Pile Cap Cofferdam	18	04-Oct-12 A	11-Jan-13	Fabrication of Marine Pile Cap Cofferdam																	
1011-2150	F3 Pile Cap Construction	36	12-Jan-13	26-Feb-13	F3 Pile Cap Construction																	
1011-2160	F3 Pier/Column Construction	12	27-Feb-13	12-Mar-13	F3 Pier/Co																	
1011-2170	F3 Crosshead Construction + Bearing	24	13-Mar-13	12-Apr-13																		
1011-2180	F4 Pile Cap Construction	36	12-Jan-13	26-Feb-13	F4 Pile Cap Construction																	
1011-2190	F4 Pier/Column Construction	12	27-Feb-13	12-Mar-13	F4 Pier/Co																	
1011-2200	F4 Crosshead Construction + Bearing	24	13-Mar-13	12-Apr-13																		
1011-2010	Dismantle Piling Platform at Pier F5	0	20-Nov-12 A	30-Nov-12 A	Dismantle Piling Platform at Pier F5																	
1011-2210	F5 Pile Cap Construction	30	27-Feb-13	04-Apr-13																		
1011-1790.50	Pier F6 Dolphin Socketed H-Pile 4	0	03-Nov-12 A	05-Dec-12 A	Pier F6 Dolphin Socketed H-Pile 4																	
1011-1790.60	Pier F6 Dolphin Socketed H-Pile 6	0	03-Nov-12 A	07-Dec-12 A	Pier F6 Dolphin Socketed H-Pile 6																	
1011-2020	F6 Dismantle Piling Platform	12	28-Dec-12	11-Jan-13	F6 Dismantle Piling Platform																	
1011-2240	F6 Pile Cap Construction	30	27-Feb-13	04-Apr-13																		
1011-1910.50	Pier F7 Dolphin Socketed H-Pile 4	8	19-Nov-12 A	29-Dec-12	Pier F7 Dolphin Socketed H-Pile 4																	
1011-1910.60	Pier F7 Dolphin Socketed H-Pile 6	4	19-Nov-12 A	24-Dec-12	Pier F7 Dolphin Socketed H-Pile 6																	
1011-2030	F7 Dismantle Piling Platform	12	08-Jan-13	21-Jan-13	F7 Dismantle Piling Platform																	
1011-1862.14	Pier F8 Dolphin Socketed H-Pile 4	0	17-Oct-12 A	30-Nov-12 A	Pier F8 Dolphin Socketed H-Pile 4																	
1011-1862.15	Pier F8 Dolphin Socketed H-Pile 6	0	16-Oct-12 A	03-Dec-12 A	Pier F8 Dolphin Socketed H-Pile 6																	
1011-2040	F8 Dismantle Piling Platform	0	06-Dec-12 A	12-Dec-12 A	F8 Dismantle Piling Platform																	
1011-0802.5	Pier F9 Dolphin Socketed H-Pile P5	0	08-Oct-12 A	29-Nov-12 A	Pier F9 Dolphin Socketed H-Pile P5																	
1011-1802.1	Pier F9 Dolphin Socketed H-Pile P1	0	27-Oct-12 A	22-Nov-12 A	Pier F9 Dolphin Socketed H-Pile P1																	
1011-1802.2	Pier F9 Dolphin Socketed H-Pile P2	0	09-Oct-12 A	24-Nov-12 A	Pier F9 Dolphin Socketed H-Pile P2																	
1011-1802.3	Pier F9 Dolphin Socketed H-Pile P3	0	08-Oct-12 A	27-Nov-12 A	Pier F9 Dolphin Socketed H-Pile P3																	
1011-0802.4	Pier F9 Dolphin Socketed H-Pile P4	9	04-Dec-12 A	31-Dec-12	Pier F9 Dolphin Socketed H-Pile P4																	
1011-0802.6	Pier F9 Dolphin Socketed H-Pile P6	12	04-Dec-12 A	04-Jan-13	Pier F9 Dolphin Socketed H-Pile P6																	
1011-2050	Dismantle Piling Platform at Pier F9	18	05-Jan-13	25-Jan-13	Dismantle Piling Platform at Pier F9																	
1011-1970.1	Pier F10 Dolphin Socketed H-Pile P1	7	15-Nov-12 A	28-Dec-12	Pier F10 Dolphin Socketed H-Pile P1																	
1011-1970.2	Pier F10 Dolphin Socketed H-Pile P2	11	15-Nov-12 A	03-Jan-13	Pier F10 Dolphin Socketed H-Pile P2																	
1011-1970.3	Pier F10 Dolphin Socketed H-Pile P3	13	15-Nov-12 A	05-Jan-13	Pier F10 Dolphin Socketed H-Pile P3																	
1011-1970.4	Pier F10 Dolphin Socketed H-Pile P5	15	15-Nov-12 A	08-Jan-13	Pier F10 Dolphin Socketed H-Pile P5																	
1011-1970.5	Pier F10 Dolphin Socketed H-Pile P4	21	09-Jan-13	01-Feb-13	Pier F10 Dolphin Socketed H-Pile P4																	
1011-1970.6	Pier F10 Dolphin Socketed H-Pile P6	21	09-Jan-13	01-Feb-13	Pier F10 Dolphin Socketed H-Pile P6																	
1011-2060	Dismantle Piling Platform at Pier F10	12	13-Feb-13	26-Feb-13	Dismantle Piling Platform at P																	
1011-1770.1	Pier F11 Dolphin Socketed H-Pile P1	14	23-Nov-12 A	07-Jan-13	Pier F11 Dolphin Socketed H-Pile P1																	
1011-1770.2	Pier F11 Dolphin Socketed H-Pile P2	16	23-Nov-12 A	09-Jan-13	Pier F11 Dolphin Socketed H-Pile P2																	
1011-1770.3	Pier F11 Dolphin Socketed H-Pile P3	18	23-Nov-12 A	11-Jan-13	Pier F11 Dolphin Socketed H-Pile P3																	
1011-1770.4	Pier F11 Dolphin Socketed H-Pile P5	21	23-Nov-12 A	15-Jan-13	Pier F11 Dolphin Socketed H-Pile P5																	
1011-1770.5	Pier F11 Dolphin Socketed H-Pile P4	21	16-Jan-13	08-Feb-13	Pier F11 Dolphin Socketed H-Pile P4																	
1011-1770.6	Pier F11 Dolphin Socketed H-Pile P6	21	16-Jan-13	08-Feb-13	Pier F11 Dolphin Socketed H-Pile P6																	
1011-2070	Dismantle Piling Platform at Pier F11	12	13-Feb-13	26-Feb-13	Dismantle Piling Platform at P																	
1011-1822.1	Pier F12 Dolphin Socketed H-Pile P1	15	16-Jan-13	01-Feb-13	Pier F12 Dolphin Socketed H-Pile P1																	
1011-1822.2	Pier F12 Dolphin Socketed H-Pile P2	15	18-Jan-13	04-Feb-13	Pier F12 Dolphin Socketed H-Pile P2																	
1011-1822.3	Pier F12 Dolphin Socketed H-Pile P3	15	21-Jan-13	06-Feb-13	Pier F12 Dolphin Socketed H-Pile P3																	
1011-1822.4	Pier F12 Dolphin Socketed H-Pile P5	15	23-Jan-13	08-Feb-13	Pier F12 Dolphin Socketed H-Pile P5																	

- Remaining Level of Effort
- Actual Level of Effort
- Actual Work
- Remaining Work
- Critical Remaining Work
- ◆ Milestone

**Contract HY/2009/19**

**Three Month Rolling Programme (20 DEC 2012 to 19 MAR 2013)**

3MRP

3MRP - DEC 2012 to Mar 2013





Activity ID	Activity Name	Rem Dur	Start	Finish	2012							2013												
					December							January			February				March					
					9	26	03	10	17	24	31	07	14	21	28	04	11	18	25	04	11	18		
<b>Pier Construction</b>																								
1014-1010	Pier E1b-1 Bored Pile	18	24-Dec-12	15-Jan-13																				
1014-1220	Pier E1b-4 Bored Pile	18	16-Jan-13	05-Feb-13																				
1014-1230	Pier E1b-3 Bored Pile	30	06-Feb-13	15-Mar-13																				
<b>10.6 - Tunnel Approach Ramp</b>																								
<b>10.6.1 - Approach Ramp (Excluding Portion IIB)</b>																								
<b>Bored Piles</b>																								
1061-1051	Bored Pile Ramp - BN42	10	10-Dec-12 A	02-Jan-13																				
1061-1490	Bored Pile Ramp - BN40	18	03-Jan-13	23-Jan-13																				
1061-1500	Bored Pile Ramp - BN44	18	24-Jan-13	16-Feb-13																				

- Remaining Level of Effort
- Actual Level of Effort
- Actual Work
- Remaining Work
- Critical Remaining Work
- ◆ Milestone

**Contract HY/2009/19**

**Three Month Rolling Programme (20 DEC 2012 to 19 MAR 2013)**

3MRP  
 3MRP - DEC 2012 to Mar 2013  
 Page 6 of 6